

FontPad Server Technical Specifications

General Requirements

Mac OS X 10.6 or higher

Linux 3.0.0/Ubuntu 11.x

Windows XP, Vista, 7

- 15 Megabytes RAM
- 25 Megabytes Available Storage
- TCP Network Connection

Supported Font Formats

- OpenType (.otf)
- TrueType (.ttf)
- Web OpenType Font Format (.woff)
- Embedded OpenType (.eot)
- Scalable Vector Graphic (.svg)

Supported Network Protocols

- TCP
- UDP
- HTTP
- HTTPS
- SSL

Default TCP Socket Count: 500

Default TCP Port: 22110

Default UDP Ports: 22111, 22112

Security Features

- Domain Blocking & Control
- HTTPS using SSL Certificates
- Stealth Mode 404 Response
- Automatic Fault Recovery
- Runs Without User Login

Performance Features

- Dynamic Network Data Caching
- Threaded Background Services
- Custom Font Set Handling

Using FontPad Server as a Stand Alone Server

FontPad Server can be configured to run on a computer that is dedicated to only serving web fonts.

For instance, the "http://fonts.MyCompany.com" domain name could resolve to a machine that is only running FontPad Server.

In that case, you would set the port number in FontPad Server to "80" or to "443" if you are using SSL.

This approach requires that you register a unique Domain name with your Domain Registrar and set the DNS to resolve to the IP address of the machine running FontPad Server.

This configuration has the benefits of easy domain name use (i.e. no cumbersome port numbers to remember or distribute) and isolates web font traffic to a single machine, which enhances network performance and security.

Using FontPad Server as a Service

Another way to configure FontPad Server is to have it running on a machine that is already hosting other network services (e.g. a web server, mail server, etc.)

The advantage of this approach is that most (or all) of your network services are handled by one machine, which can make set up and management easier and more efficient.

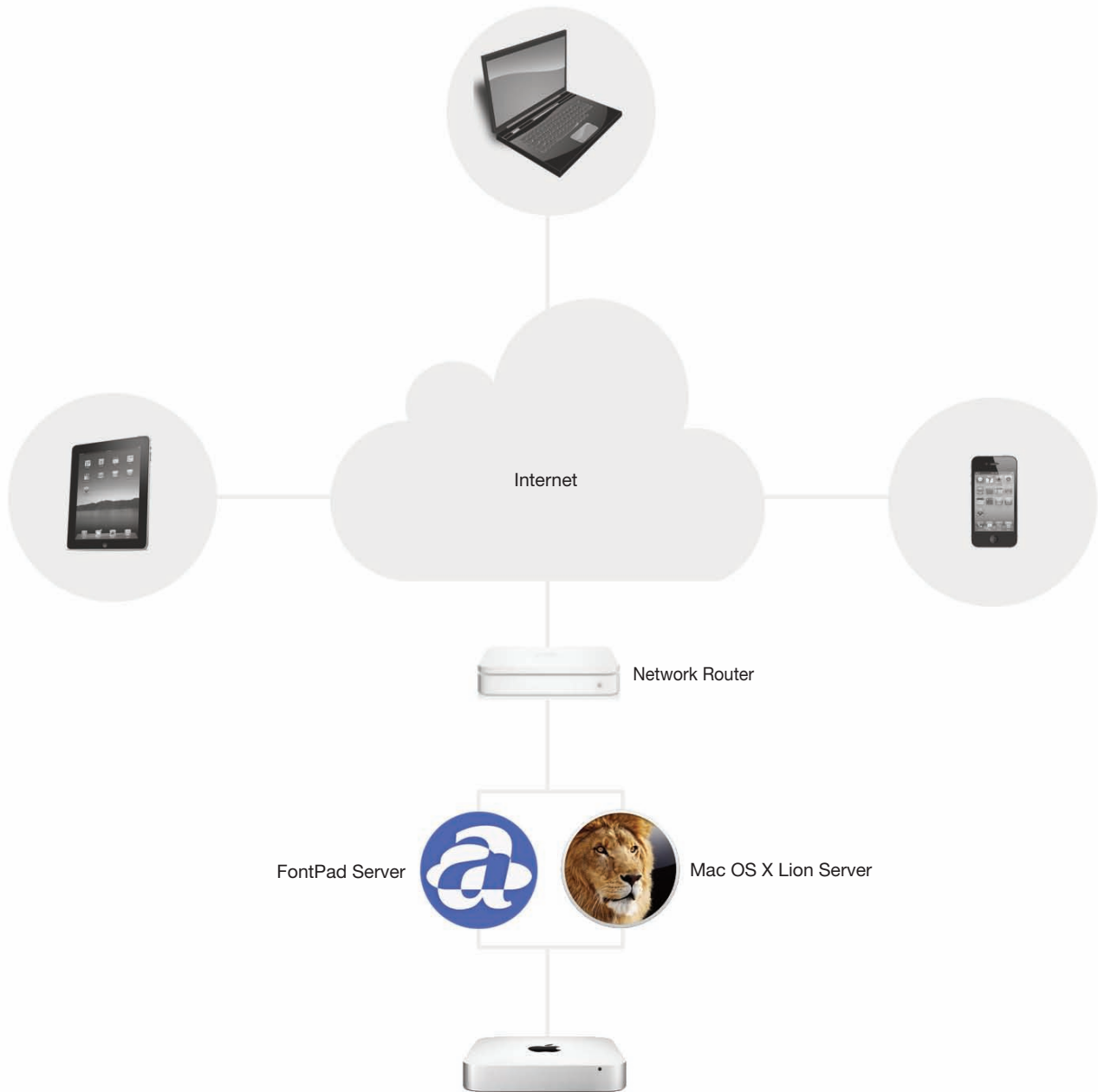
This configuration requires a custom port number that does not conflict with any other service on the machine.

See Diagrams Below for More Details

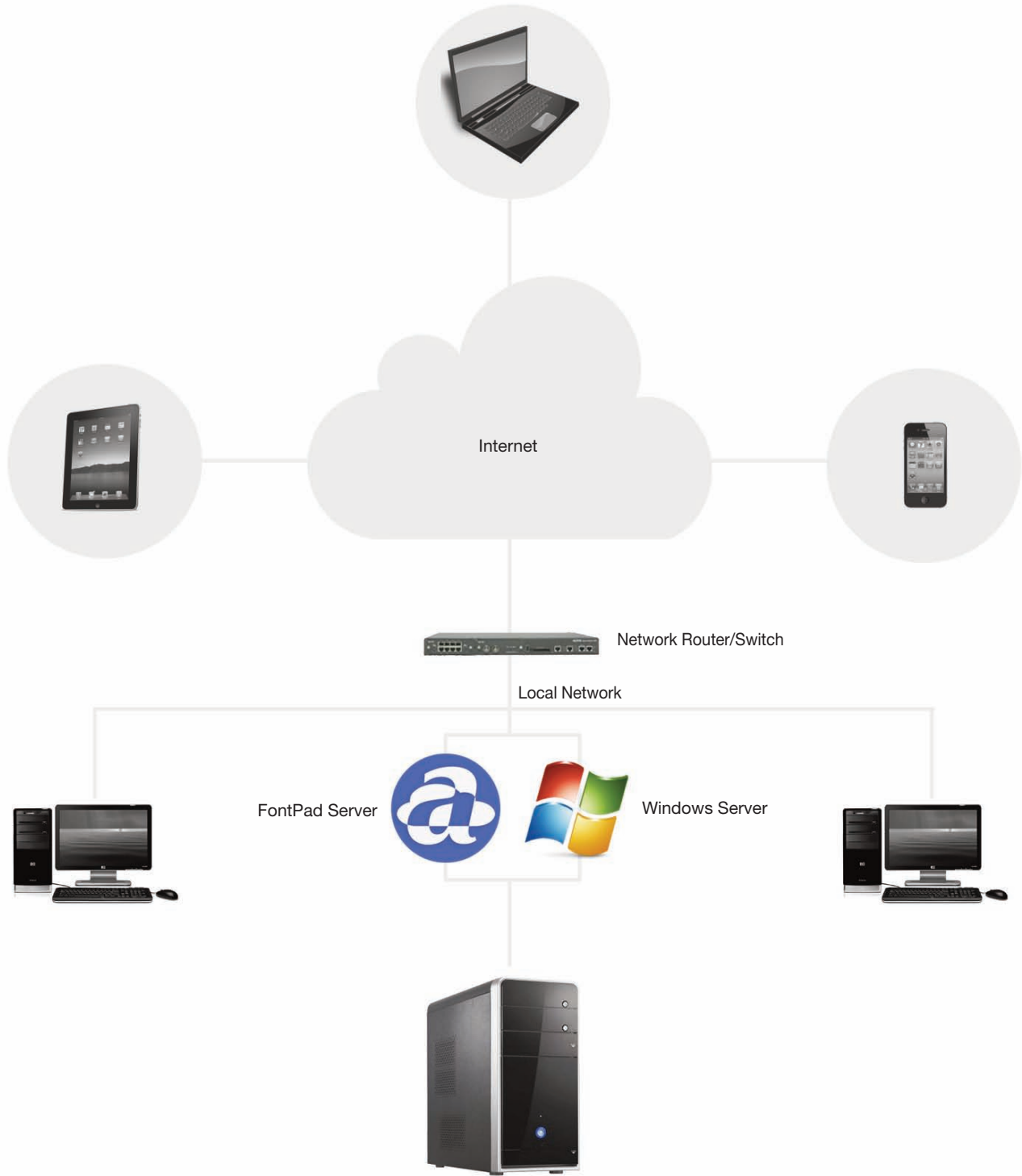


FontGear, Inc.
8124 Grahamson Lane, Suite 102
Charlotte, NC 28269
1-800-583-2917

www.FontGear.net
info@FontGear.net



In this diagram, FontPad Server is running as a service on a Mac OS X Server that handles web service to the internet



In this diagram, FontPad Server is running as a service on a Windows Server that serves a Local Area Network (LAN) and the internet (WAN)