

QUICK START GUIDE

Getting right to
work in FontGenius

With the wide availability of so many different font designs, it can sometimes be difficult to identify particular fonts. There seems to be no easy way to identify fonts used in photographs, print, and on websites.

FontGenius is a font identification utility for Macintosh. FontGenius examines images and will identify the font family of text within a picture. The built-in features include advanced recognition technology that allows FontGenius to produce a list of fonts that most closely match selected characters within an image, previews of matched fonts, and internet search of matched results to locate, purchase, and/or download fonts from online font vendors.

The steps to identify fonts in FontGenius involve opening a picture, using the tools in FontGenius to adjust the image and select the characters to want to identify, then reviewing the results.

This guide provides a brief overview of how to use FontGenius to identify fonts.

For more comprehensive help please see the online Help using the Help menu in FontGenius.

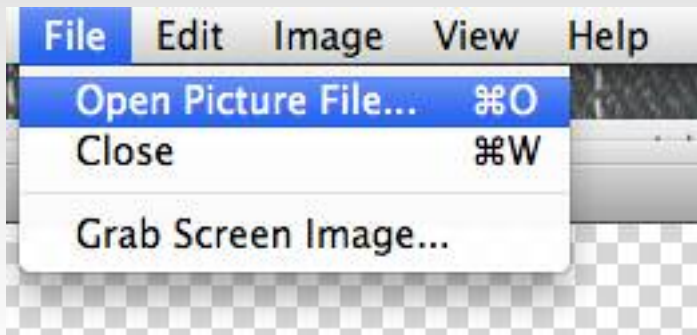


FONTGEAR[®]
Professional font software

1-800-583-2917
www.FontGear.net
info@FontGear.net

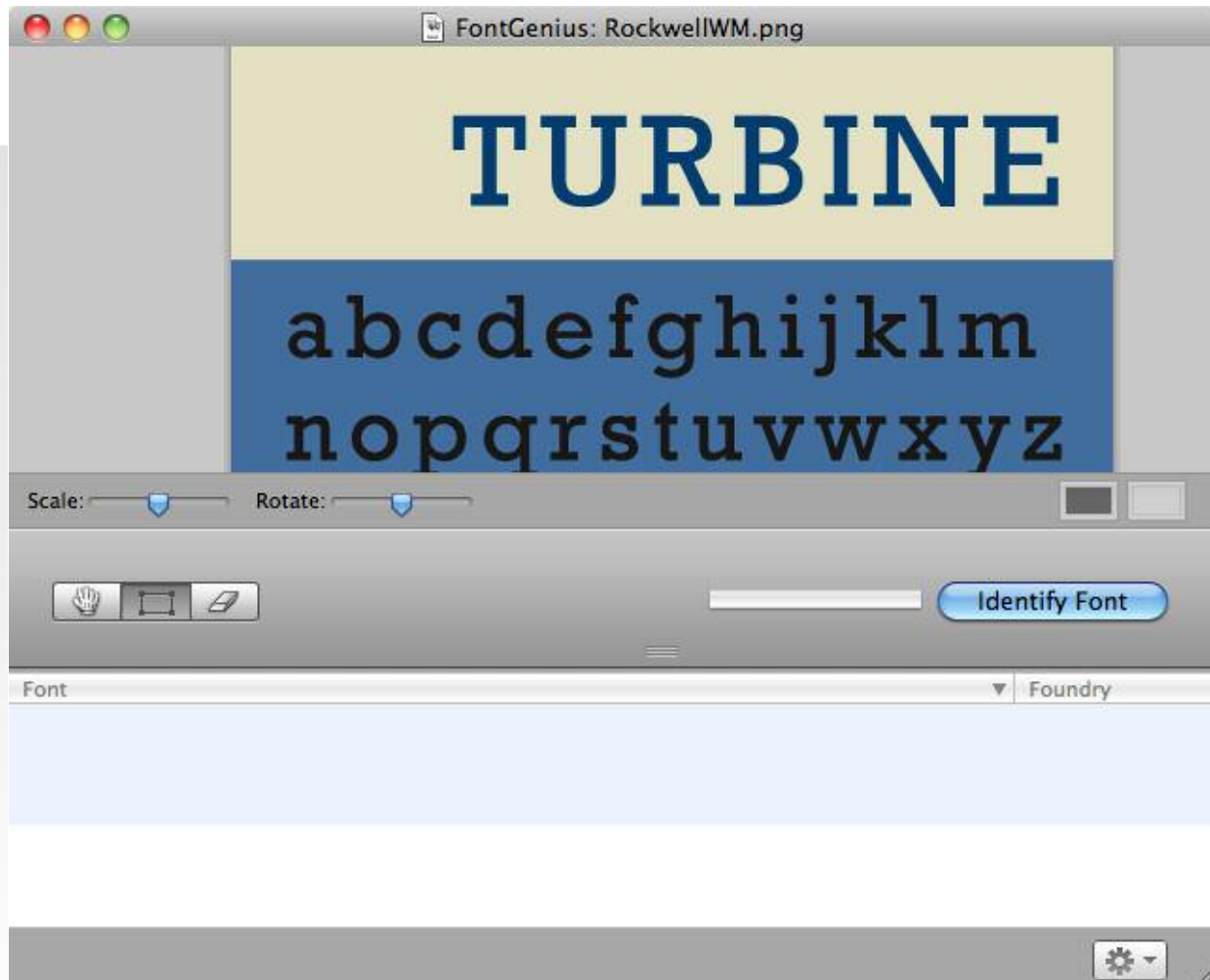
STEP 1: OPEN A PICTURE FILE

FontGenius supports most common image formats, including JPEG, PNG, and PICT files.



Use the File > Open Picture File menu to Open a picture file in FontGenius.

You can also drag a picture from another application right into the FontGenius window.

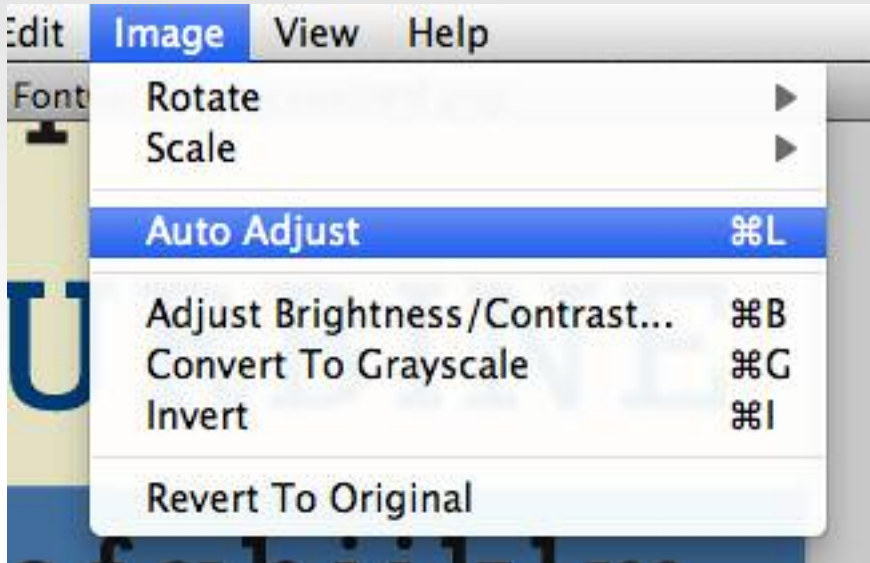


The picture appears in the main window of FontGenius.

STEP 2: ADJUST IMAGE COLOR

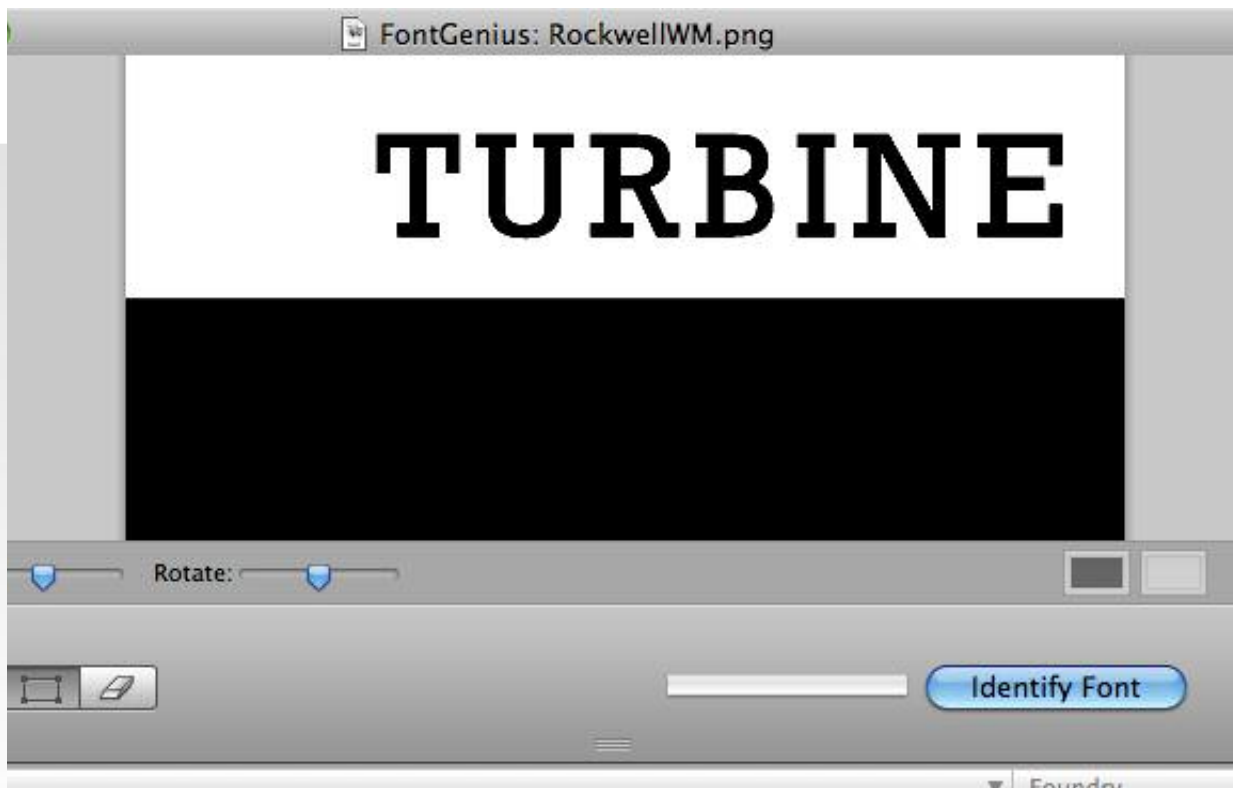
This step involves working with the image color to get the best results. The goal is to get as close as possible to a black and white image with black characters and a white background.

The Auto Adjust menu will usually apply the right steps to accomplish this.



Use the **Image > Auto Adjust** menu to automatically adjust the colors in the image for the best results.

NOTE: If the image is reversed (*white* characters on *black* background) you should use the **Invert** menu item to reverse the colors to black characters on a white background.



The **Auto Adjust** menu correctly applied has created black characters on a white background.

STEP 3: MAKE A SELECTION

Use the **Selection Tool** with **Auto Select** checked to select the characters in the image.



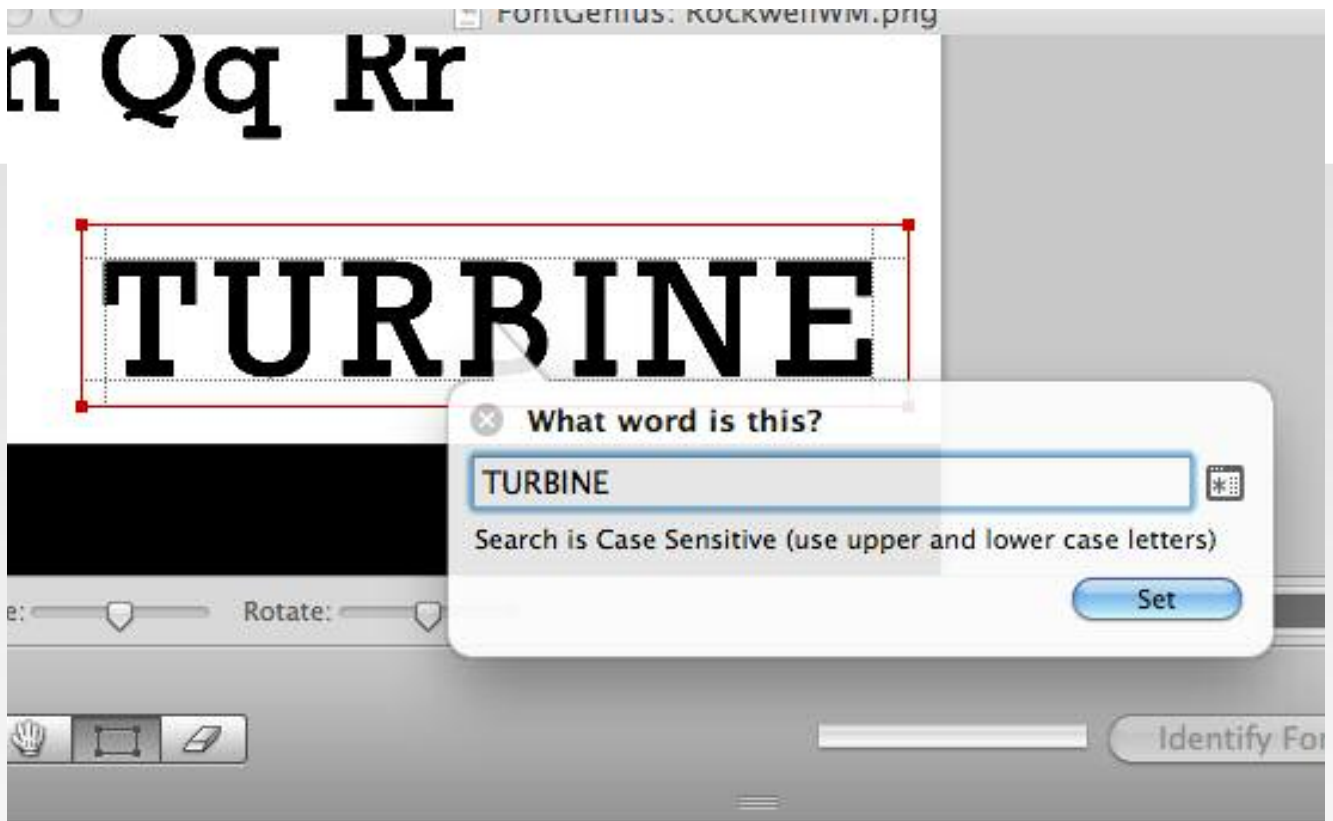
Click the **Selection Tool** icon in then main window.



Click and drag the **Selection Tool** over all the characters in the image.

STEP 4: VERIFY SELECTION

After creating a selection rectangle you will be asked to type in the letters that are selected. Note that the letters should match case (use upper case and lower case letters to match the image)



If you need to correct a selection rectangle (i.e change the letters) then double-click the selection rectangle, type in the correct letter, then click the Set button.

The small color chip icons represent the **character** and **background** colors of each selection rectangle respectively. If you need to adjust the colors, then use the color chip buttons in the main window.

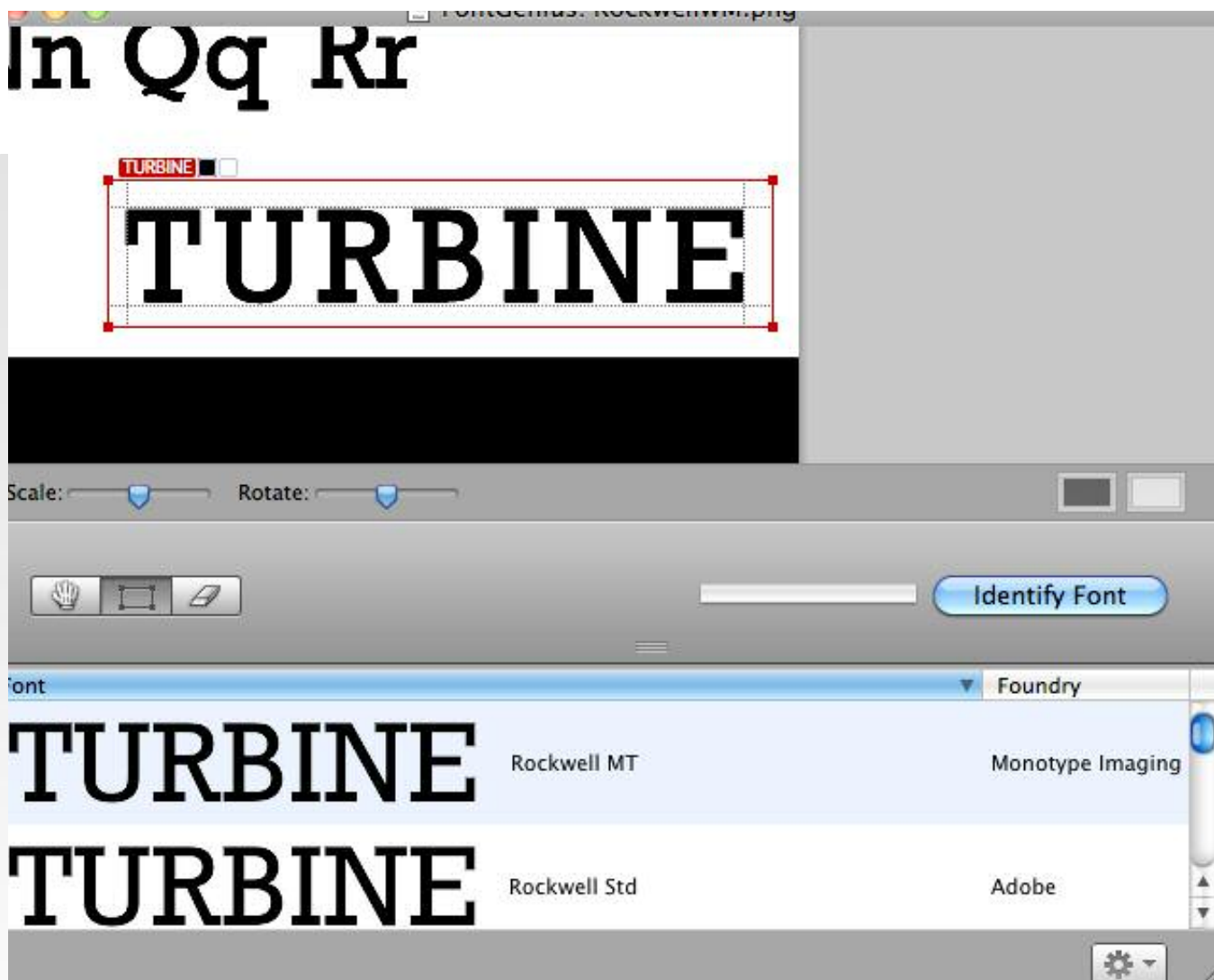


The color chip buttons in the main window are used to set the selection rectangle **character** and **background** colors.

To set a color, click on a selection rectangle then click a color button. Use the eyedropper to select a new color by clicking in the image.

STEP 5: CLICK THE IDENTIFY FONT BUTTON

Clicking the Identify Font button will start the font identification process and will produce a list of results that best reflect the font in the image.



In the results list you can see the fonts samples that FontGenius found for the selected image.

Double-clicking on the font names in the list will launch your default web browser and will find the selected fonts on the internet for you.